

Bangor Payroll

Installing Evolution

To Download the Evolution Client

Go to: <http://www.bangor.com/Your-Business-Banking/Business-Services/Payroll-Tax-Download-Links.aspx>

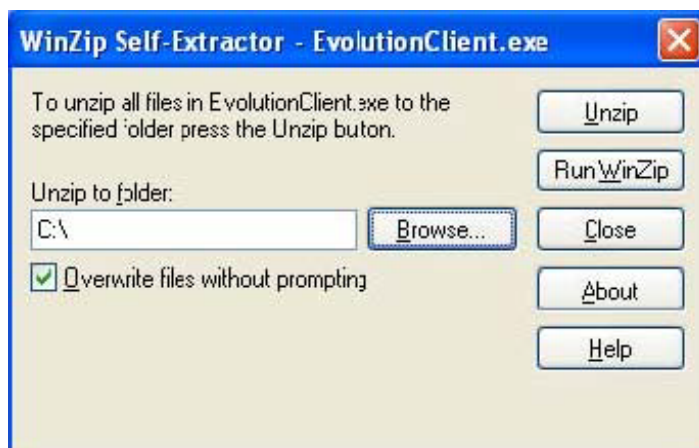
1. Under “Downloads” click “Evolution Client,” to download.
2. When prompted, select the “Save” button and browse to save the installer to your Desktop.

To Install Evolution

You must be logged in with Administrator rights to install Evolution. If you are unclear if you have admin rights, please contact your IT professional.

Exit all Windows programs before running the setup program.

1. Locate the EvolutionClient.exe on your desktop.
2. Double-click the **EvolutionClient.exe** file to start the installation. You should see the prompt shown below. When prompted where to unzip the files, click the browse button and select the C:\ drive as indicated below. Then, click the “Unzip” button.



3. It will prompt you for a password as shown below. If the password has not already been provided to you, please call your customer service representative at 1-800-471-3300.

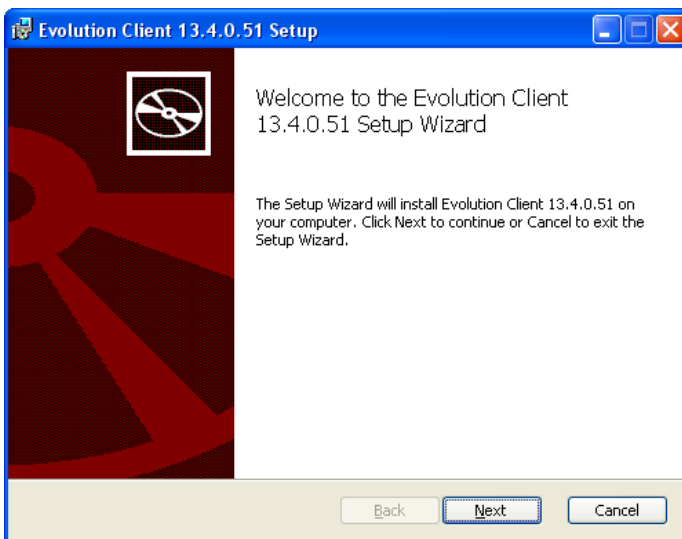


Once you enter the password and click ok it will unzip the self-extracted file and place the EvoClient_13.4.0.51.msi installer file on your C:\ drive.

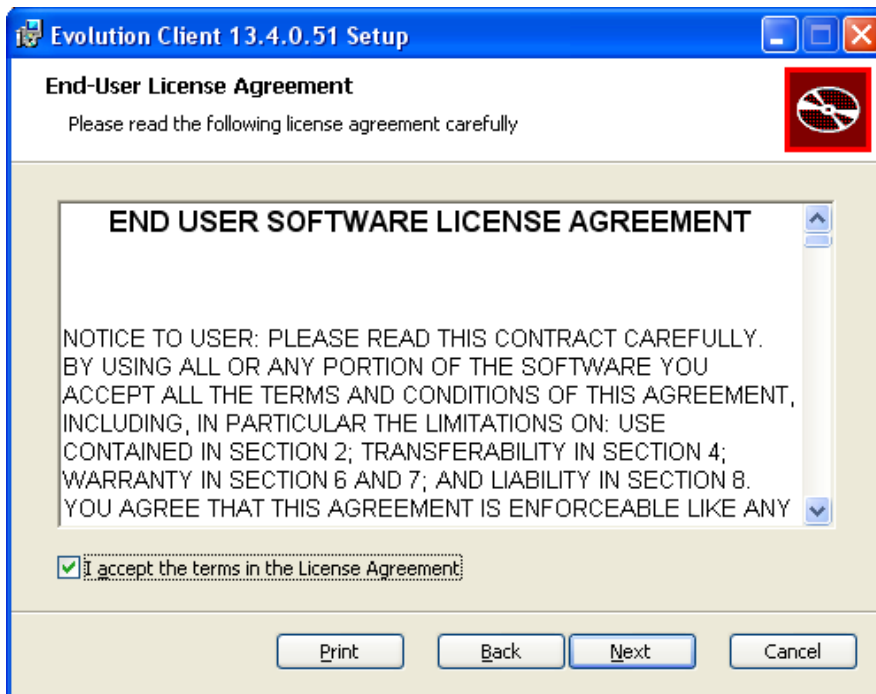
4. Browse to your C: drive, and double click the **EvoClient_13.4.0.51.msi** file to start the installation. If you receive the message below click Run.



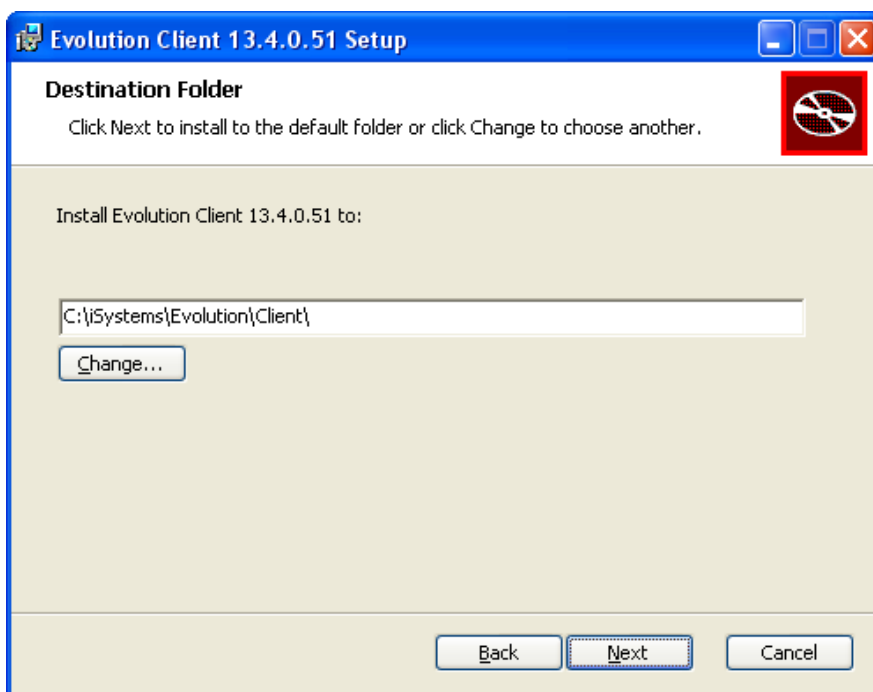
5. When the Welcome dialog box appears, click **Next**.



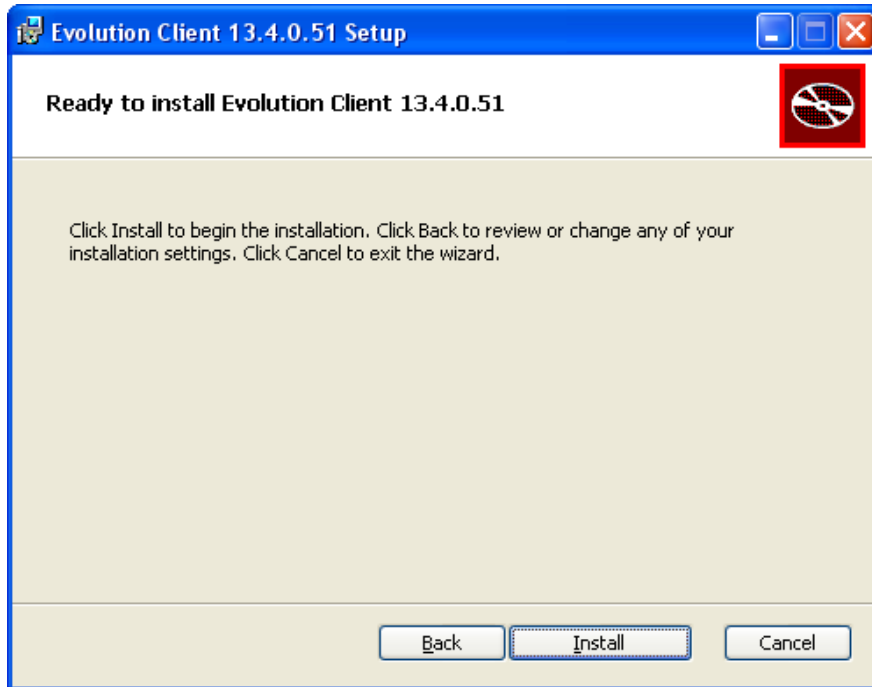
6. The next screen shows the End-User License Agreement. Check I accept and click **Next**.



7. The next screen shows the default location where **EvoClient_13.4.0.51.msi** will be installed. Verify that the default location is C:\Systems\Evolution\Client. Click **Next**.



8. The next screen shows the Evolution Client install screen.



9. Click the **Install** button. Installation is now complete!

10. While logged in with Administrator rights, open the Evolution client once by clicking on the Evolution icon as shown below.



Then you will see the following box appear, once it appears, close it. This will install the Evolution Report Writer feature, which needs to be installed with administrator rights. If this step is missed your report writer will not function properly. Then log off and sign in as you normally would.



To connect to Evolution, you will need to contact your CSR for the Server name and Compression settings.